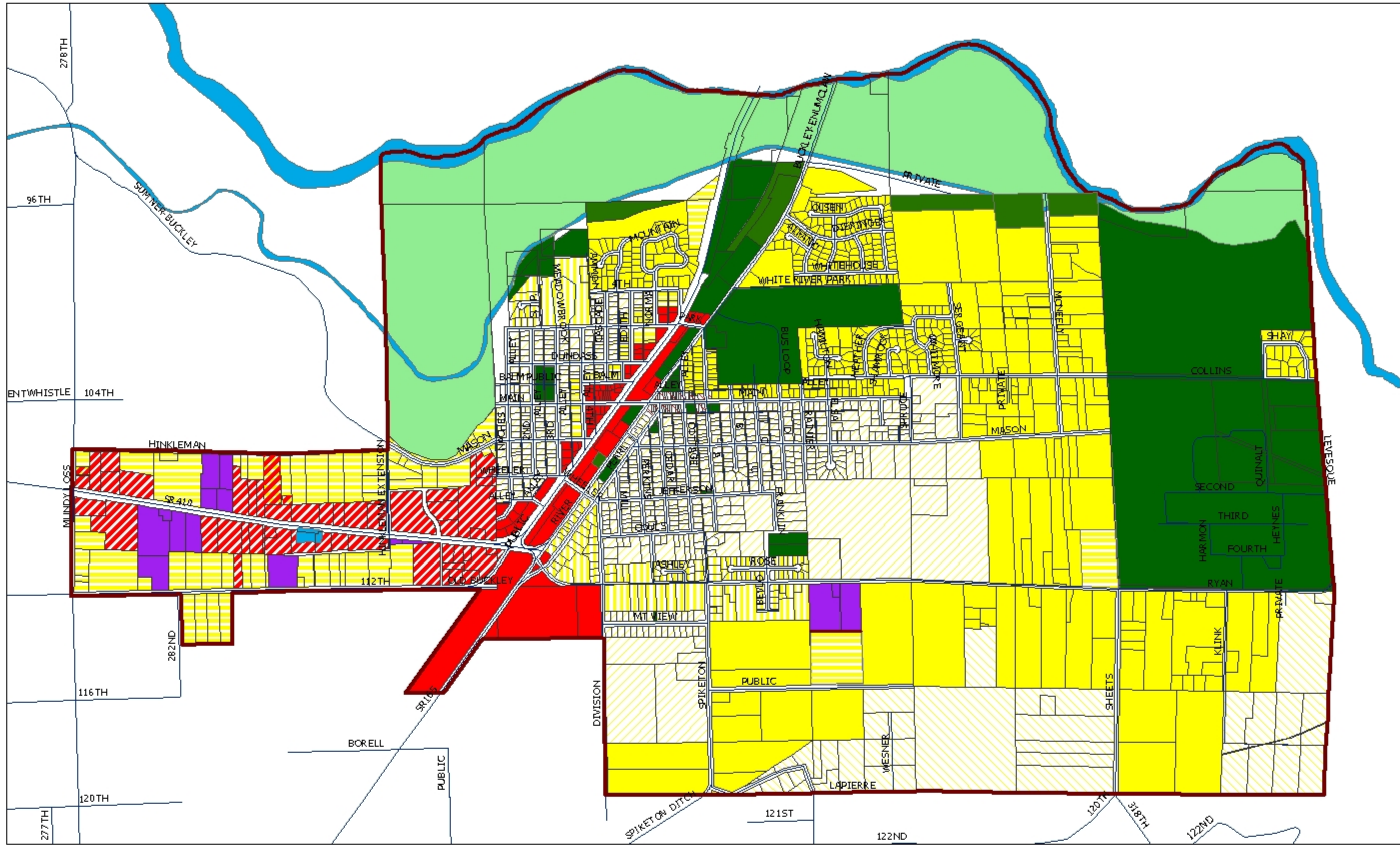


# City of Buckley Zoning November 2005

**Legend**

- City Limits
- Parcel
- Street
- Water
- S - Seaside Area
- P - Public Institutional
- OC - Central Comm'l
- GC - General Comm'l
- HC - Historic Comm'l
- LI - Light Industrial
- HDR - High Density Res.
- R-6000 (Res.)
- R-8000 (Res.)
- R-20,000 (Res.)
- NMU - Neigh. Mxd. Use



Print Optimized:  
 Tabloid Size  
 (11x17)

11/22/2005  
 Drawn by  
 Dan Staley Planning Director  
 City of Buckley  
 360.829.1921 ext 207  
 dstaley@cityofbuckley.com

Additional explanation and  
 definitions can be found in:  
 City Hall, Buckley Library,  
 Planning & Building Dept, or  
 on the web at:  
<http://www.cityofbuckley.com/>  
 click on 'Building & Planning Dept'



1 inch equals 1,250 feet

1:15,000

public version